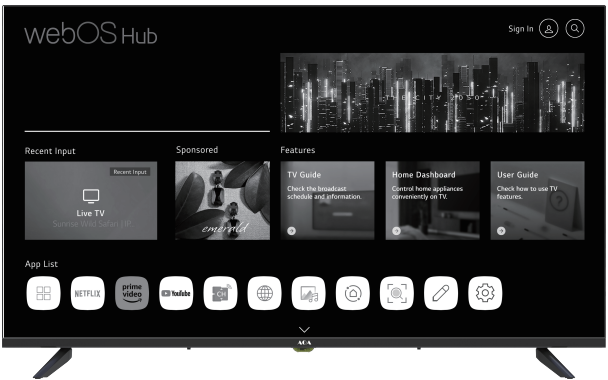




powered by webOS Hub

MODEL: LTW40FHD



Quick Start Guide

Please read this manual carefully before TV operation.
Retain it for future reference.

PREFACE

1. Read this Quick Start Guide before starting Set-up.
2. Then, carefully follow the Instructions, heeding all Warnings.
3. Do Not remove the TV back cover or block the TV ventilation openings.
4. Do Not use the TV near water or a heat Source.
5. Do not pinch or cut the Power Cord.

Note:

The product and illustrations in this user's manual is only for explanation purposes and may vary depending on model.

WARNING

Never place a television set in an unstable location. A television set may fall, causing serious personal injury or death. Many injuries, particularly to children, can be avoided by taking simple precautions such as:

- Using cabinets or stands recommended by the manufacturer of the television set.
- Only using furniture that can safely support the television set.
- Ensuring the television set is not overhanging the edge of the supporting furniture.
- Not placing the television set on tall furniture (for example, cupboards or bookcases) without anchoring both the furniture and the television set to a suitable support.
- Not placing the television set on cloth or other materials that may be located between the television set and supporting furniture.
- Educating children about the dangers of climbing on furniture to reach the television set or its controls

If your existing television set is being retained and relocated, the same considerations as above should be applied.

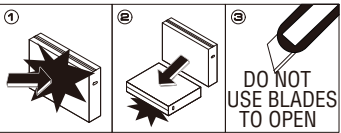
The plug or appliance coupler is used as the disconnect device, the disconnect device shall remain readily operable.

1.Unpack the TV and Accessories from the Carton Box

1. Please see the unpacking instructions on the top of the carton box (and below).
2. As noted, be careful not to grab or put pressure on the TV screen.
3. Check the carton box carefully for all included Accessories.

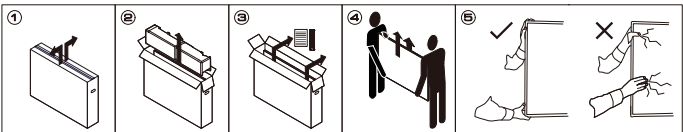


DO NOT



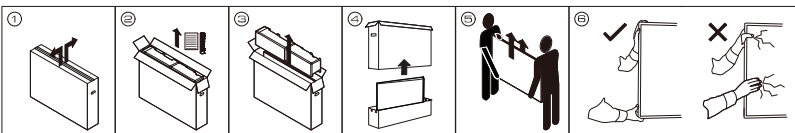
UNPACK
WITH CARE

For 32" - 58"

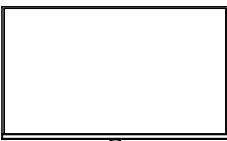


UNPACK
WITH CARE

For 65" - 75"



2.Package Contents



TV x 1pc



Quick Start Guide x 1pc



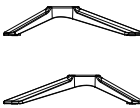
AAA Batteries for
Remote x 2 pcs



Screws for Table
Stands x 4 pcs



Remote Control x 1pc



Stands x 2 pcs

3.What You Will Need for Set-up (Not Included)

- Philips Head Screwdriver
- Internet Connection (Needed for Smart TV Streaming)
- Wireless Router (Needed for Smart TV Streaming)
- Computer, Tablet or Smart Phone (Needed for Smart TV Set-Up)

4.Attach the Table Stands

How to assemble the stand

If you need to remove or assemble the stand please read the following instructions.

- Before attaching/detaching the stand, make sure to turn off the TV.
- Before performing work, spread cushioning over the base area to lay the LED TV on. This will prevent it from being damaged.

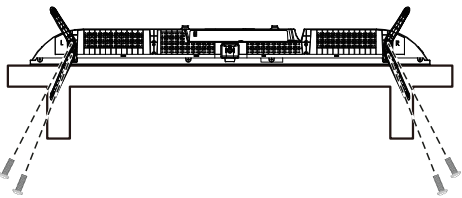
Assembling instruction:

Put the television on the table, fix the stands with four screws given in the carton.

Step1: Fasten the base assembly with 4 screws given in the carton.

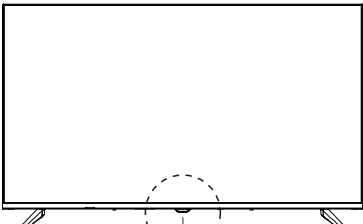
Step2: Insert the assembled base into the hole, take out 4 screws provided with TV set and tighten them into screw holes.

- To disconnect the stand from the TV, perform the above steps in reverse order.

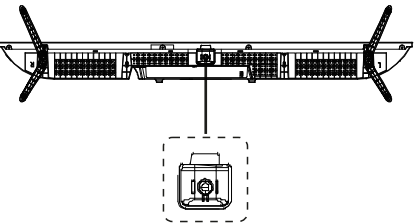


5.Front panel

The buttons on the lower-right panel control your TV's basic features, including the on-screen menu. To use the more advanced features, you must use the remote control.



Remote Control Sensor
Power Indicator



6.Specifications

Model	LTW40FHD
Display size	40" Diagonal (max.)
LED panel resolution	1920X1080
Speaker output power	≤8Wx2
Power supply	110-240V~, 50/60Hz
TV receive system	Digital: DVB-T/C/T2 Analog: PAL/SECAM
Frequency range	46-862MHz
Video in	PAL: D/K,I,B/G, SECAM: D/K,I,B/G
Power consumption	74W
Standby consumption	≤0.5W
Antenna input	75 ohms
Controller power	DC 3V (Two AAA size batteries)
Work temperature	0°C-40°C

NOTES:

- Design and specifications are subject to change without notice.
- Weight and Dimension shown are approximate.

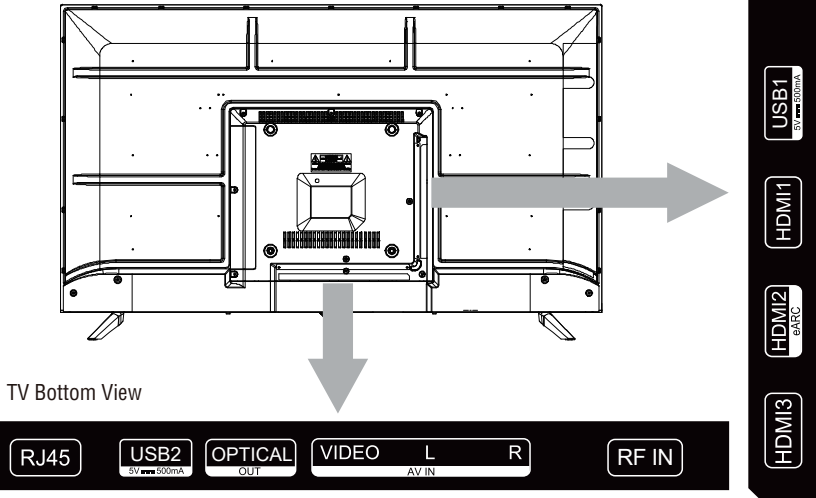
7.Connect The TV

1. Insert the female end of the Power Cord into the back of the TV.
Then carefully plug the standard AC plug end into a 120V AC outlet.
2. If you are connecting other devices to the TV, utilize the appropriate optional cables and
connect to the appropriate ports on the back or side of the TV.

Location of Connections

TV Side View

Back View of the TV



The terms HDMI and HDMI High-Definition Multimedia Interface, and the HDMI Logo are trademarks or registered trademarks of HDMI Licensing Administrator, Inc. in the United States and other countries.

TV label		Cable	External Equipment
RF			 Antenna
RJ45			
HDMI			VIDEO EQUIPMENT
AV IN	VIDEO	 Yellow	 Camcorder
	L	 White	
	R	 Red	
USB			
OPTICAL			 Audio Receiver
EARPHONE			

The TV can be connected to the following devices: Cable Box, Satellite Box, Antenna, Video Game, Stereo System, Sound Bar, Headphones, Blu-ray Player, DVD Player, VCR, Streaming Box or Stick, Camcorder, etc.

8.Prepare The Remote Control

Remove the battery cover and insert the provided batteries. Then replace the battery cover.

Installing Batteries

1

Open the battery compartment cover on the back side.

Battery Cover

2

Insert two 1.5V AAA size batteries in correct polarity. Don't mix old or used batteries with new ones.

2xsize AAA 1.5V

3

Closed the cover.

Battery Cover

30° 30°

✦ Point the remote towards the remote control sensor of the TV and use it within 8 meters.
✦ Put the used batteries into the recycling bin since they can negatively affect the environment.

- Note:
- 1) Batteries should last approximately one year under normal use (actual use will vary).
- 2) If the TV will remain inactive for an extended period of time, remove the batteries from the remote control to avoid possible damage due to leakage.
- 3) Do not mix old and new batteries or different types of batteries.
- 4) Do not throw batteries into fire or water.
- 5) The batteries (battery pack or batteries installed) should not be exposed to excessive heat such as sunshine, fire or the like.

REMOTE CONTROL OUTLOOK & FUNCTION KEY DEFINITION



- POWER** : power ON/OFF.
- TV/RAD** : Switch to TV or radio.
- Q** : Search.
- SUBTITLE** : Subtitles On/Off.
- : Enter the quick setup menu.
- : Input source selection.
- 0-9** : Numeric keys.
- LIST**: Channel list.
- ...**: Show other actions.
- : Setting the volume.
- : Channel switching.
- AD**: Enabling / disabling the AD function.
- GUIDE**: TV programme display.
- : Mute.
- : Play.
- : Shows main menu.
- II**: Pause.
- BACK** : Back to the previous step.
- EXIT**: Closes the menu.
- : Selects the currently highlighted option.
- : The RIGHT/LEFT/UP/DOWN buttons to move through the menu.
- TEXT** : Opens teletext.
- T.OPT**: Open the teletext function menu.
- MOVIES** : Movie search.
- REC**: Starts recording.
- : Starts live playback.
- NETFLIX**: launches Netflix.
- prime video**: launches Prime video.
- : Correspond various color functions in the menu or in the teletext.

WEE2.0



- It provides guides related to TV manipulation,broadcasting,content utilization, device connection, smart functions,settings,and problem solving so that users can refer to it when using TV.
- You can watch the manual at the same time while watching TV or running the app.
- You can easily view the user s manual using the Description menu or Magic Explorer function.

9.Trouble Shooting

Having trouble?
Don't worry, it's usually an easy fix.

After Auto Tuning only some channels are available	Check your area is covered by Digital Video Broadcasts. Try re-tuning or manually tuning missing channels. Check that you are using the correct antenna type.
Channel cannot be selected	Check if the channel has been blocked in the main menu settings.
USB not playing	Please check connecting USB cable and power supply is connected. Hard drive has not been formatted. Please make sure USB disk is compatible and the multimedia data formats are supported.
Picture is distorted, macroblock, small block, dots, pixelization, etc	Compression of video contents may cause distortion especially on fast moving pictures such as sports and action movies.
Noise from speaker	Check cable connections, make sure a video cable is not connected to an audio input. Low signal level may cause sound distortion.
TV turns off automatically	Check if the Off Timer is set to On in the Setup menu. Sleep Timer may have been enabled. If there is no signal for about 10 minutes from an input, the TV will turn off.
TV turns on automatically	Check if the On Timer is set to On in the Setup menu.
Picture is not shown in full screen	Black bars on each side will be shown on HD channels when displaying SD (4:3) contents. Black bars on Top & Bottom will be shown on movies that have aspect ratios different from your TV. Adjust picture size option on your external device or TV to full screen.